

FACS Melody start-up

Baker SterilGARD System:

1. Raise sash to the red arrows.

If a biohazard sort, turn on AMS to low.

2. Turn on compressor.
3. Turn on Melody (power button next to sample window)
Wait for sheath tank to pressurize.
You will hear it after approx. 3 minutes.
Alternatively leave on 10-15' and come back.

4. Log-in to Windows:
 User:
 Password:

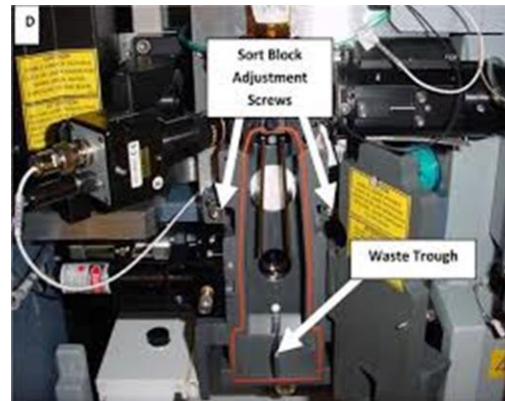
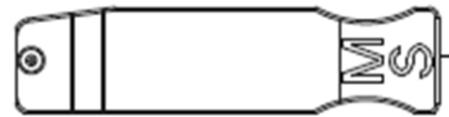
5. Launch Chorus software.

6. Run Daily or Extended Start-up
 Will give warning prompt.
 (if off for 2+ days)
 Follow wizard: Keep doors closed!
 Closed-loop nozzle-double check
 Sheath/Waste
 Start sheath filter purge prime stream
 Takes ~7 min for Extended Start-up

Closed loop nozzle installed



Integrated nozzle



Cleaning:
 Skip.

Deflection Plates:
 7. Check metal deflection plates.
 If needed remove metal deflection sort plates and clean with 70% EtOH. Dry with lint-free paper.

Sort Nozzle:
 8. Clean nozzle with 70%EtOH
 9. **At Prompt:** Remove closed-loop and insert sort nozzle ring facing up and to the back of the flow cell.
 10. Close sort chamber door. Click "continue". To observe stream start up click on "Stream" and watch for drop formation. Check to see if waste stream is centered. Adjust if necessary using allen wrench.
 11. When green check mark appears stream is stable. Open sort chamber door and clean the waste drawer with bleach, FACS Rinse, followed by H₂O. If it backs up clean with green swab.

Standard Operating Procedure for FACS Melody StartUp and ShutDown

FACS MELODY start-up

Run "CST"

Follow prompts

Load CST Beads (need 1 ml)

If CST does not pass, contact technical support for troubleshooting

CST beads one drop per ml of PBS/Sheath.

If CST passes, go to Run Drop Delay/AccuDrop

Beads are in the small refrigerator labeled Melody.

Prepare a tube of Drop Delay/Accudrop beads in PBS/Sheath, place in bulk injection chamber

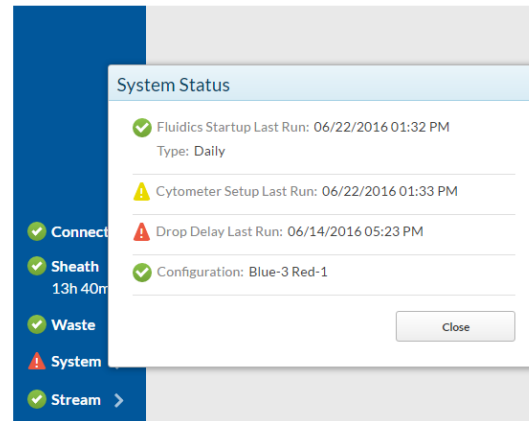
Run Drop Delay/AccuDrop

Follow prompts

Load Drop Delay/AccuDrop beads (1 ml)

To observe Drop Delay start up click on "Stream" and watch for side stream formation.

Drop Delay/AccuDrop beads one drop per 2ml of PBS/Sheath.



FACS Melody daily shut down

Select either by:

Cytometer -> Daily Shut Down

Log off-> Next window select Daily Shut Down

Follow prompts

Remove the integrated nozzle and replace it with the closed loop nozzle*

Load cleaner

Turn off cytometer

Log out of the Chorus software

Quit the application

Sign out of Windows

Turn off compressor

Lower the hood sash.

When the application is quit the instrument will release internal fluidics pressure. No need to depressurize the sheath tank.

*If not detected rinse with dH2O. **Careful not to rub the red o-ring.** If still not detected touch nozzle to metal housing while clicking on “ok” then insert the nozzle. See photo.

